

Part NO. SS-RUI7875P901N	Type RFID Antenna
---------------------------------	-------------------

Electrical Characteristics

Antenna

1	Antenna model	78*78*7.5mm
2	Frequency Range	902MHz~928MHz
3	V.S.W.R	2.0 max
4	Band With@RL=-10dB	≥15MHz
5	Gain@Zenith	4.5dBi@90°90mm Ground
6	Impedance	50 Ω
7	Polarization	RHCP
8	Axial Ratio@Zenith	<3dB

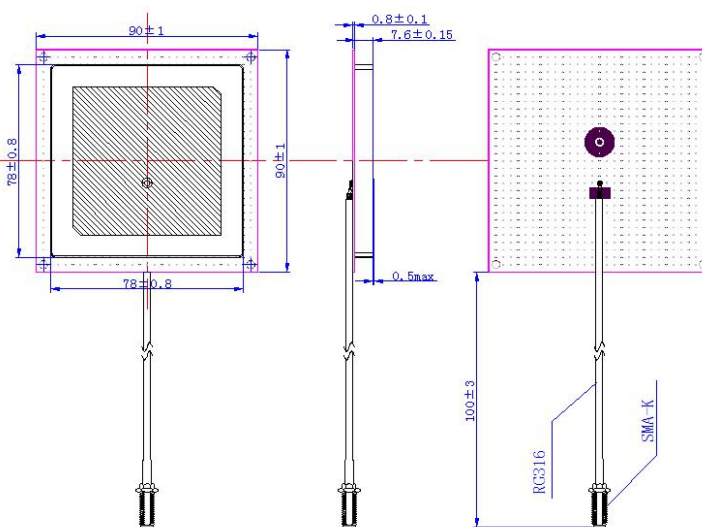
Material

No	Part Name	Spec
1	Antenna	Dielectric Ceramics
2	Ground	0.8mm, FR-4
3	Cable	L=135mm, RG-316
4	Connector	SMA-K (Female)

Environment Condition

1	Working Temp	-40°C~+85°C, 10%~95% RH
2	Storage Temp	-45°C~+85°C, 10%~95% RH

Dimensions



Return Loss & Impedance

